

IOP-DANFO-5M3000606

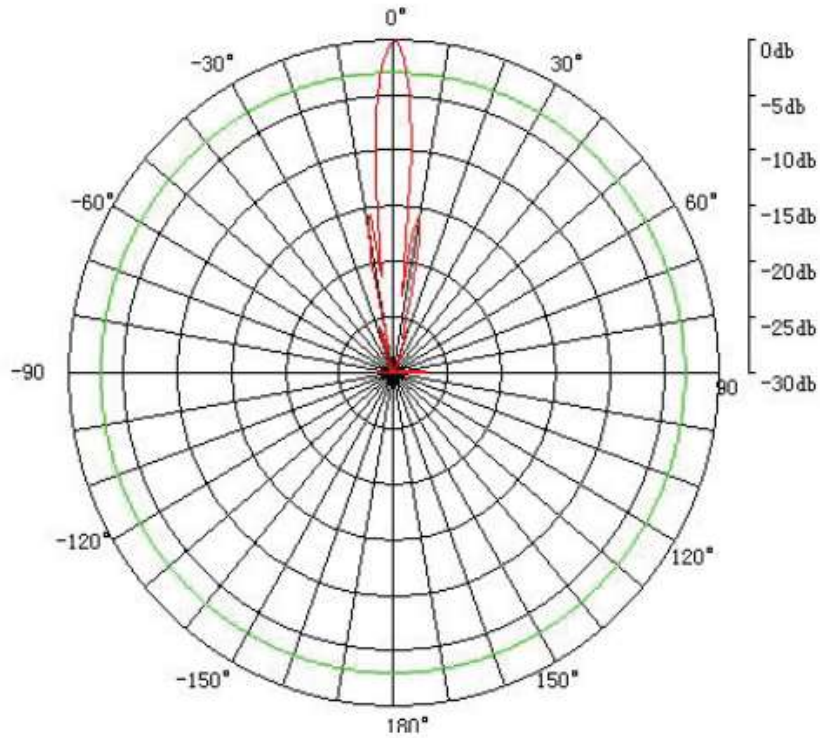
5GHz 30dBi Dual Polarization MIMO Dish Antenna

Electrical Specification	
Frequency range	5150 - 5850 MHz
Gain	30 dBi
VSWR	1.8 : 1 Max.
Polarization	Dual Linear, +- 90°
HPBW / Horizontal	6°
HPBW / Vertical	6°
Standard compliance	N / A
Front to back ratio	-35dB (Max)
Isolation	24dB (Min)
Power handling	100W (cw)
Impedance	50 Ohms
Connector	N Jack Female × 2
Environmental & Mechanical Characteristics	
Survival wind speed	241Km/hr
Temperature	-40°C to +80°C
Humidity	95% @ 55°C
Radome color	Gray
Radome material	Aluminum Die Cast
Weight	6.15Kg
Dimensions	Φ 600
Mounting Mast Dimension	Ø50 ~ Ø80

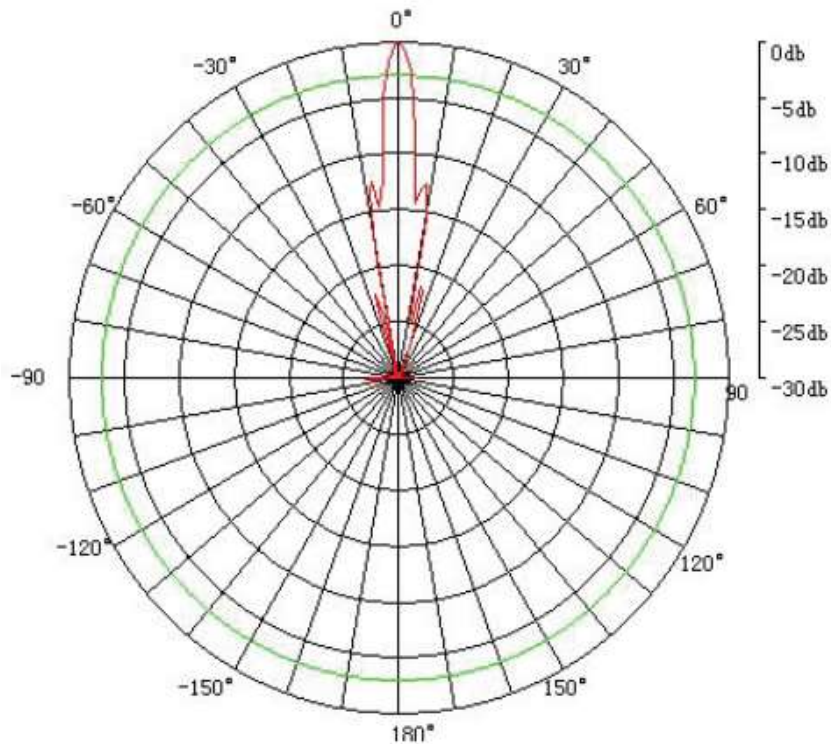
*exclusive of mounting kit



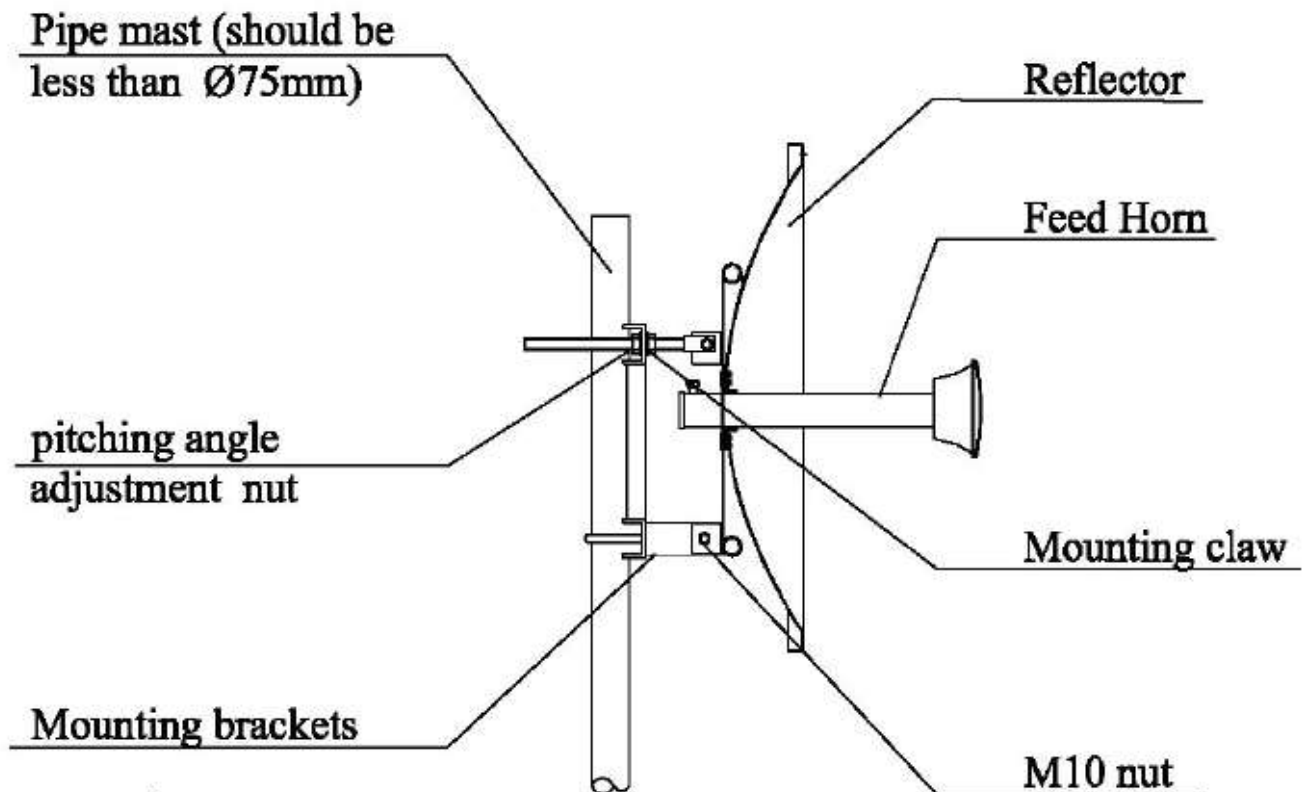
E Pattern-V Connector



H Pattern-V Connector



Mounting Diagram



Installation:

1. Mount the antenna on the brackets according to the Mounting Diagram. Make sure the antenna polarization parallel direction your need.
When the antenna polarizations are vertical to the ground, the antenna is vertical polarization. When the antenna polarizations are horizontal to the ground, the antenna is horizontal polarization.
2. Mount the antenna on the mast supplied by customer according to the mounting diagram.
3. Test the antenna with equipment to make sure the antenna receive the best signal by turning the azimuth and pitching angel, then lock all the screw and seal the connector between antenna and cable.