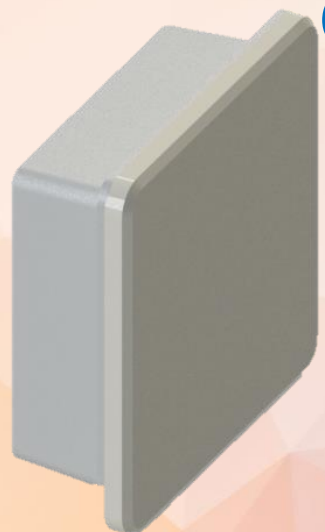
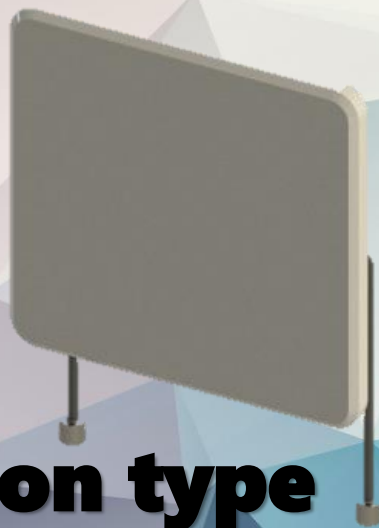


Outdoor overall model



Outdoor installation type



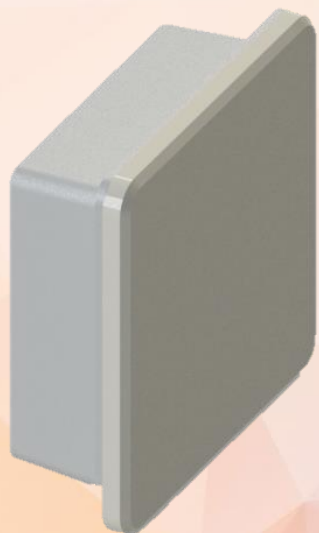
Wi-Fi 5GHz Antenna Series

- Precision dual polarization
- Ultra high gain
- Anti-interference
- Super weather resistant
- Low wind resistance
- Anti-typhoon fixture
- Long warranty guarantee



IO-Power Technology Co., Ltd.
1F., No.100, Jinzhu Rd., North Dist., Hsinchu City 30055, Taiwan
勁電科技有限公司 統一編號: 25081985
台灣 30055 新竹市北區金竹路100號1樓

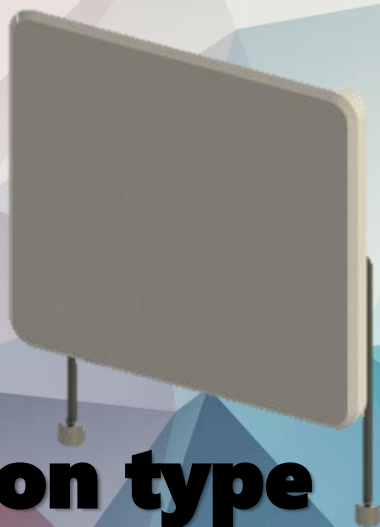
Tel: +886 3 5429395 Fax: +886 3 5357297 Cell: +886 933168849



Outdoor overall model

Integration with

- The MBAP-11ac series**
- The ELBR-11ac series**
- Can be incorporated into the EL-N-11an series**

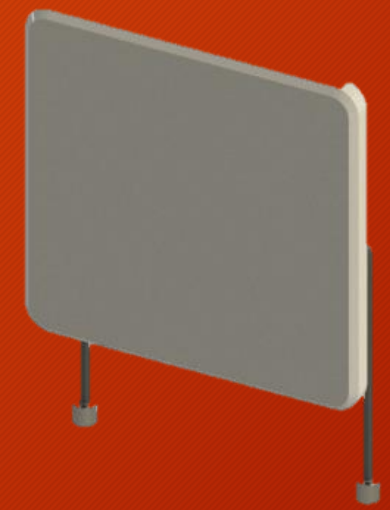


Outdoor installation type
Support 6-8Km full speed transmission rate

Wi-Fi 5GHz Antenna Series

- Precision dual polarization**
- Ultra high gain**
- Anti-interference**
- Super weather resistant**
- Low wind resistance**
- Anti-typhoon fixture**
- Long warranty guarantee**

Development Roadmap



Dual-Polar Wi-Fi 5GHz Series



18-20dBi Dual-Polar Antenna
For Outdoor distributed &
One-piece SKUs

Tri/Quad-Polar Wi-Fi 5GHz Series



14-16dBi Tri/Quad-Polar Antenna
For Outdoor distributed &
One-piece SKUs

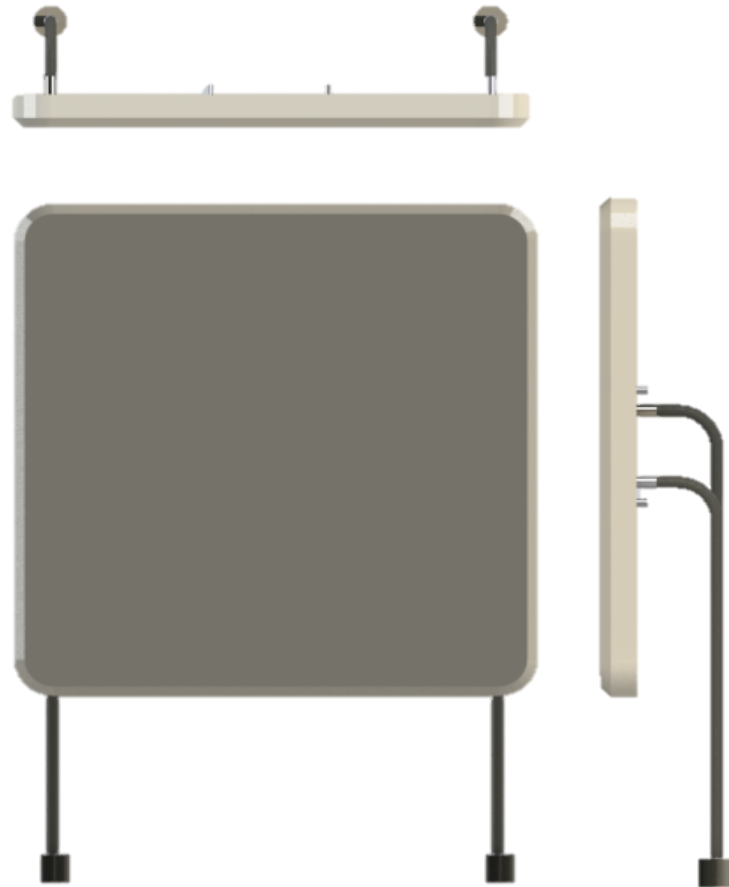
Customize / Intelligent Wi-Fi 5GHz Series



Costumed design for
Dual-band Dual-Polar Antenna
Multi-Beam 5G Dual-Polar Antenna
Intelligent Customize Special Antenna

Antenna Specification

OUTDOOR OVERALL MODEL



* Cable loss is exclusive

* Antenna Dimension is designed as 262x262x31 mm

Electrical Specification	
Frequency Range	5150 - 5875 MHz
Gain	19 dBi +/-1dBi
VSWR	2 : 1 Max.
Polarization	Dual Linear, V/H Pol.
HPBW / Horizontal	15°±2°
HPBW / Vertical	15°±2°
Front to Back Ratio	-20dB
Isolation	25dB Typl.
Power Handling	5W
Impedance	50 Ohms
Cable	RG233, 100cm
Connector	N Jack x 2
Survival wind speed	216Km/hr
Temperature	-40°C to +80°C
Mounting kit	Pole mount & Wall mount & Street light mount



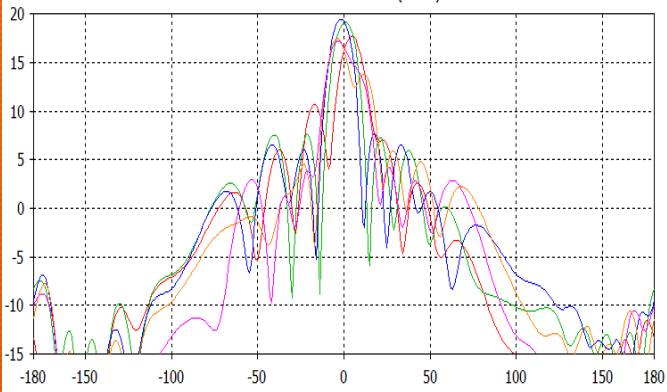
Antenna Specification -- OUTDOOR OVERALL MODEL

H-Polar

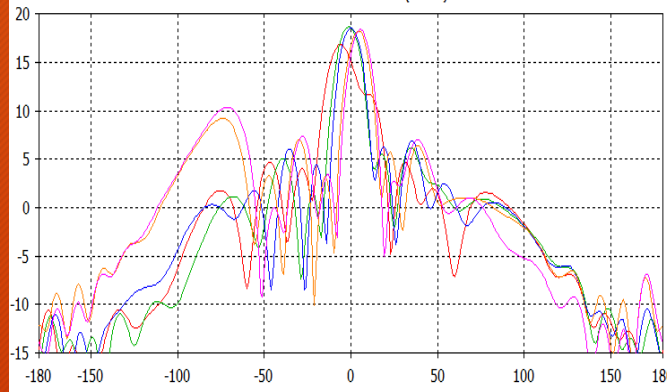
V-Polar



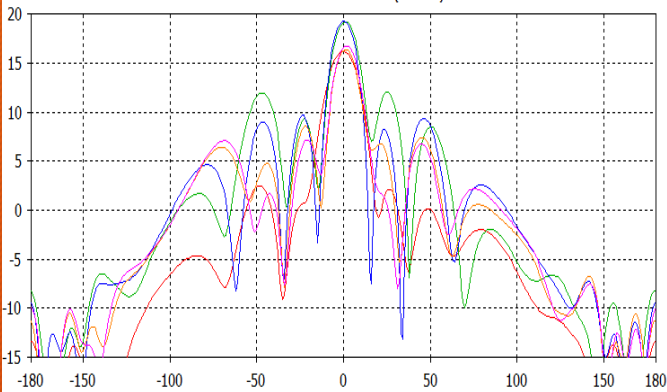
H-Plane



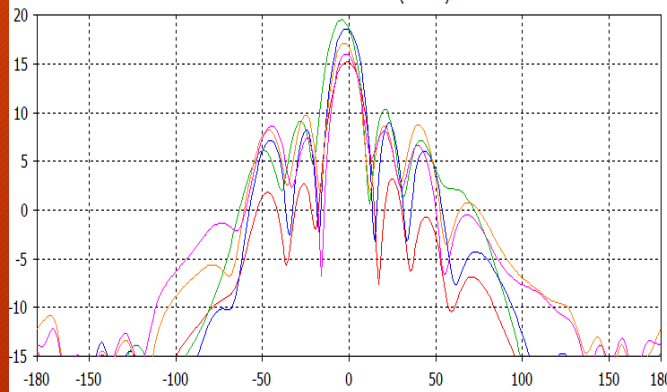
H-Plane



V-Plane

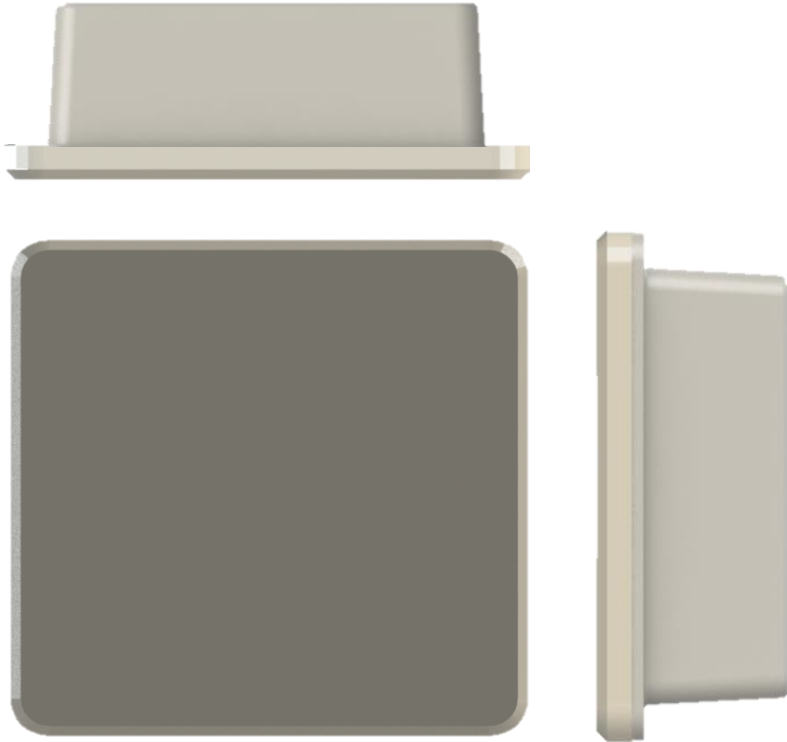


V-Plane



Antenna Specification

MBAP / ELBR SERIES



Electrical Specification	
Integrate WiFi ODU	MBAP / ELBR Series
Frequency Range	5150 - 5875 MHz
Gain	19 dBi +-1dBi
VSWR	2 : 1 Max.
Polarization	Dual Linear, V/H Pol.
HPBW / Horizontal	15°±2°
HPBW / Vertical	15°±2°
Front to Back Ratio	-20dB
Isolation	25dB Typl.
Power Handling	5W
Impedance	50 Ohms
Cable	RG233, 90cm
Connector	MMCX (Customize Type)
Survival wind speed	216Km/hr
Temperature	-40°C to +80°C
Mounting kit	Pole mount & Wall mount & Street light mount

* Cable loss is exclusive

* Antenna Dimension is designed as 262x262x31 mm

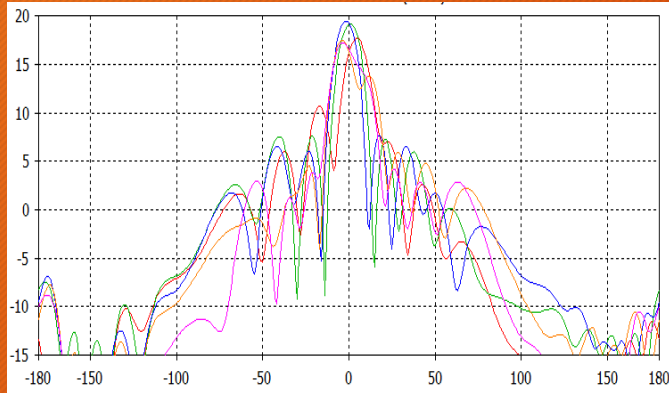
Antenna Specification MBAP / ELBR SERIES

H-Polar

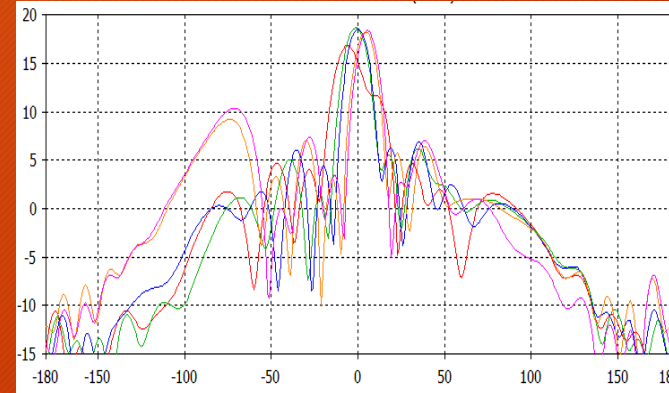
V-Polar



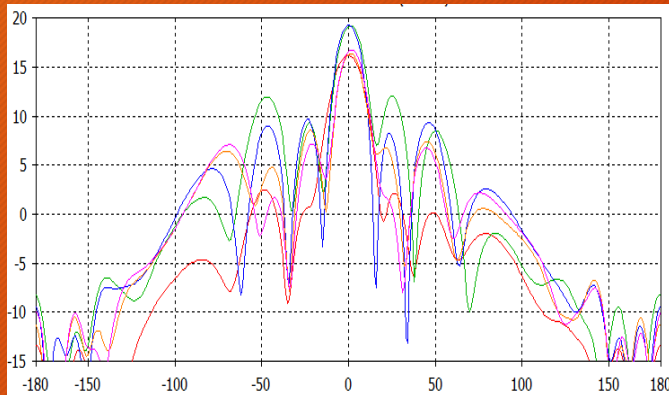
H-Plane



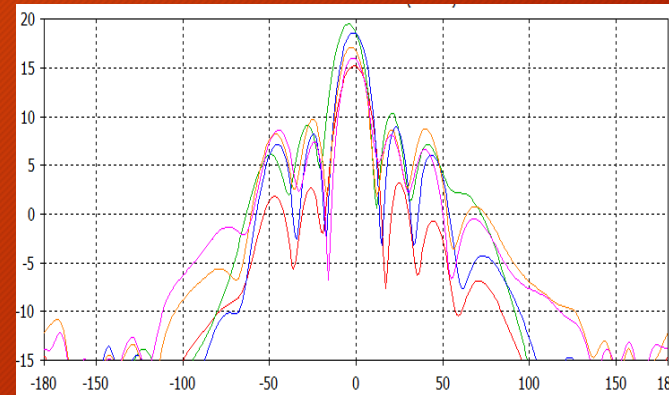
H-Plane



V-Plane



V-Plane



Thank You